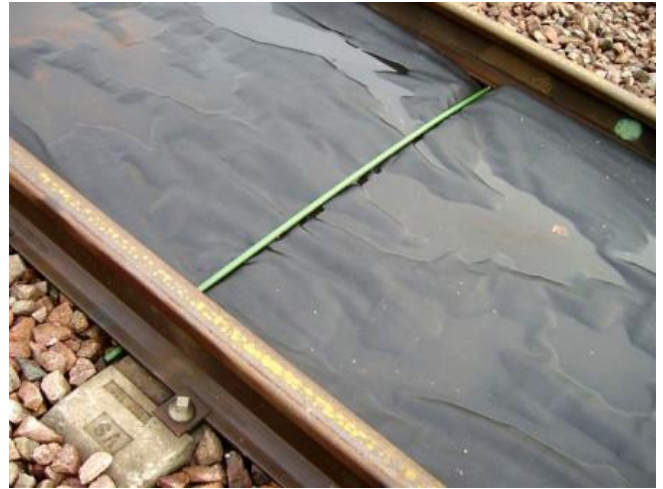


## Product Data Sheet

### SORB®XT Rail Mat

Article	SORB®XT RM
Article No.	100611
Dimensions (mm)	25.000x1.420
Weight	18,20 Kg
Absorption capacity	153,00 L



## Product Information:

### Recommended use

- For use on solid ground surfaces (outside and inside)
- Large-scale protection of soil and factory grounds
- Can be cut according to specific requirements
- Also for preventive measures for longer times
- Absorbs all kinds of oils, fuels, coatings, lubricants and other volatile substances

### Application

- Place the mat below the area, where contaminated substances are likely to spill (for example train tracks, factory sites or under large machinery and trucks)

### After application

- Collect the contaminated mat
- Dispose of following the respective valid laws and local regulations

### Storage

- Store in a dry place with low humidity

### Properties

- Adapted for track beds (width of 1,42m)
- Slip resistance
- PE-foil at bottom side prevents penetration in grounds
- Highly absorbent; can be thermally recycled
- Hydrophobic